

Southwark Safeguarding Children Partnership

-

Education Safeguarding Forum

-

03.07.2025



Southwark Safeguarding Partnership

The Southwark Safeguarding Partnership consists of the Southwark Safeguarding Children Partnership and the Southwark Adult Safeguarding Board.

Their primary objectives are to assure themselves that local safeguarding arrangements and partners act to help and protect adults and children.

The partnership will hold agencies to account for their key safeguarding responsibilities, so that:

- All those who work with adults, children and young people know what to do if they are concerned about possible harm.
- When concerns about an adult's or a child's welfare or concerns about harm are reported, action is taken quickly and the right support is provided at the right time.
- Agencies that provide services for adults, children and young people ensure that they are safe, and monitor service quality and impact.

Southwark Safeguarding Children Partnership

The aim of the partnership is to make sure that children and young people in Southwark are kept safe from harm and abuse. Its job is to co-ordinate the work of everyone working with children and their families so they can protect children effectively.

The Southwark Safeguarding Children's Partnership has an Independent Scrutineer, Anna Berry, who was appointed in February 2020. The Partnership Manager is Mary Moroney. If you wish to contact the partnership, please email sscp@southwark.gov.uk. Please do not send unsolicited confidential details of individuals to this email address. Details of who to contact if you are concerned about an individual can be found [here](#).

Southwark Safeguarding Children Partnership

Key Strategic Questions the SSCP needs to be considering:

- Is the help provided effective? How do we know our interventions are making a positive difference? How do we know all agencies are doing everything they can to ensure children and young people are safe?
- Are all partner agencies meeting their statutory responsibilities as set out in Working Together 2023?
- Do all partner agencies quality assure practice and is there evidence of learning and improving practice?
- Is safeguarding training monitored and evaluated and is there evidence of training and learning impacting on practice?

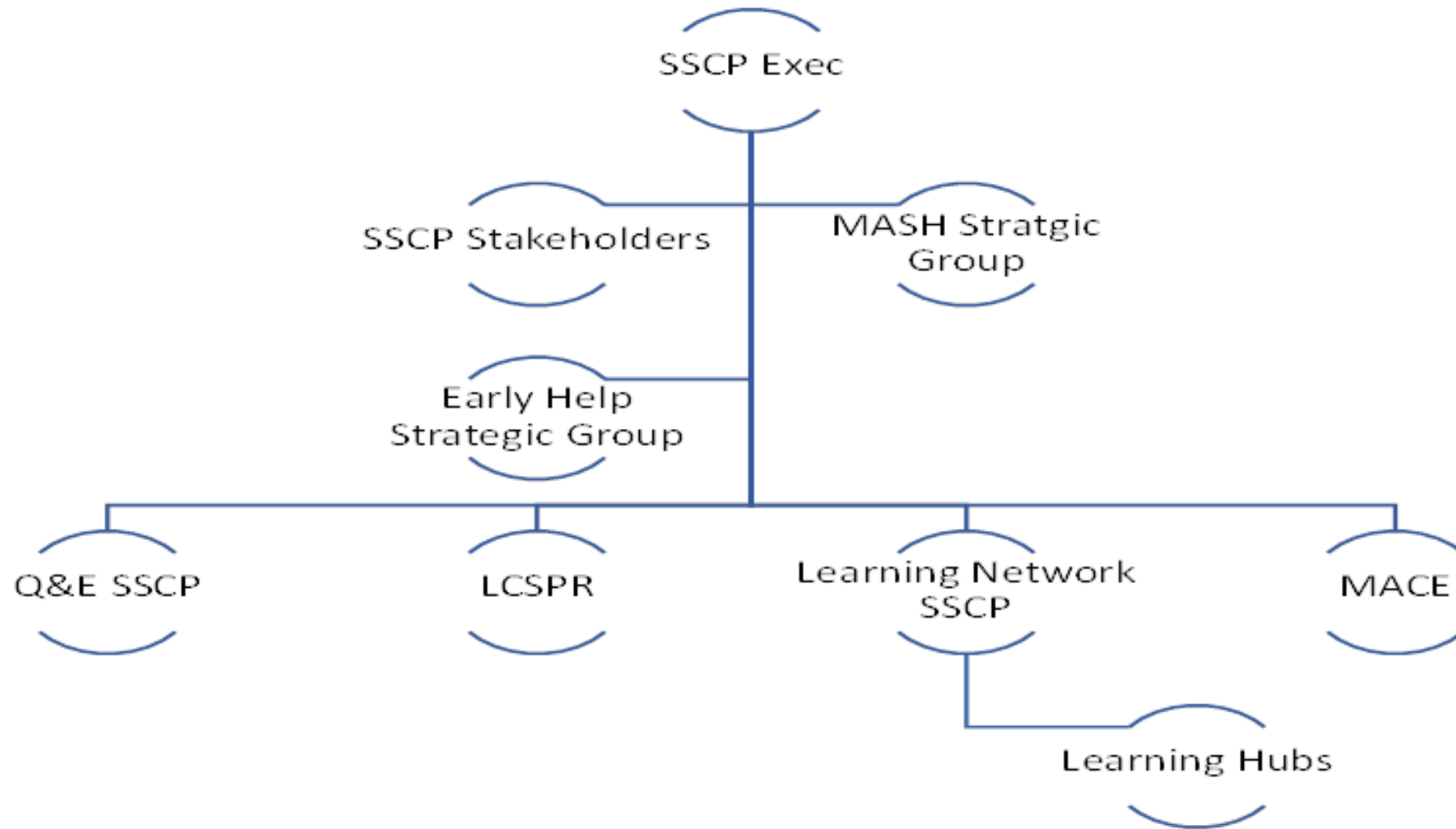
Working Together to Safeguard Children

Partnership work is vital to the successful delivery of safeguarding services and interventions in Southwark. We remain confident that safeguarding is at the heart of the services delivered by statutory and voluntary services in Southwark, and we also remain committed to maintaining an open dialogue with all our partners, and working jointly with partners to ensure the best, person-centred outcomes for children and young people.

The Department for Education published a new edition of its statutory guidance Working together to safeguard children in December 2023: [Working together to safeguard children 2023: statutory guidance](#)

This documents states that, *‘LSPs should have an education representative at strategic discussions representing the education sector.’* Further, *‘Most local multi-agency safeguarding arrangements include systems to ensure engagement and collaboration at the operational level, such as through education sub-groups and networks, practitioner forums involving designated safeguarding leads, and nominated education representatives.’*

SSCP Structure



Southwark Safeguarding Children Partnership

Learning Network

The SSCP is committed to promoting a culture which values and facilitates learning and in which the lessons learned are used to improve future practice and partnership working. This approach has facilitated robust mechanisms to review, analyse and develop practice. We are confident that our approach to learning and development drives improvements in the wider safeguarding system as well as in the outcomes experienced by users of services.

Traditionally there has been an emphasis on “training” and although uptake of training programmes can be measured, we require further assurance as to the impact this has on practice. We adopt an approach where learning is embedded in the culture of all safeguarding practice.

Southwark Safeguarding Children Partnership

Child Safeguarding Practice Review (CSPR) Subgroup

Responsibility for how lessons are learned locally from serious child safeguarding incidents lies with the safeguarding partners, via the Child Safeguarding Practice Review Subgroup.

The subgroup is responsible for identifying cases which meet the criteria for a Child Safeguarding Practice Review (threshold of 'serious harm'). For cases that fall below the threshold the group determines if there is relevant possible learning from the case, and recommends the process and methodology for understanding the learning. The group also identifies any themes or trends within local referrals and national reviews that may further improve the quality and impact of safeguarding in Southwark.

Once a review has been completed, the implementation and impact of any multi-agency lessons to be learned are monitored to ensure that the learning from all case reviewing activity is embedded in practice.

Southwark Safeguarding Children Partnership

Quality and Effectiveness Subgroup

The subgroup works to strengthen the partnership's assurance process by:

- Developing and ratifying borough- wide strategies, policies and guidance.
- Monitoring and analysing safeguarding indicators across the partnership to identify whether safeguarding practice and arrangements have led to improved outcomes for children and young people.
- Providing challenge and monitoring action plans identified through audits.
- Identifying and commissioning multi-agency audits to evaluate safeguarding practice and its impact on children, young people and families.
- Monitoring the progress of action plans arising from any local or national reviews.
- Demonstrating that the voice of the child has been heard and using this information to improve services and the effectiveness of professional practice.

Southwark Safeguarding Children Partnership

MACE – Multi-Agency Child Exploitation

The Multi-Agency Child Exploitation Meeting (MACE) has strategic oversight of all exploitation cases, information, intelligence and activity across Southwark; each Local Authority has their own MACE. The agenda is designed to ensure that all key information and intelligence is captured in every case so that the key themes and trends can be identified. As each MACE will be capturing the same key information using the Victim, Offender, Location, Themes (VOLT) mnemonic, this makes it easier to consistently share information and intelligence among partners and across borders.

The MACE is not designed to case manage individual cases but to identify, discuss and deliver a partnership response to short, medium- and longer-term themes, trends and patterns emerging from exploitation cases.

Southwark Safeguarding Children Partnership

MASH Strategic Board

The Southwark Safeguarding Children Partnership are looking for representatives from Southwark Schools to sit on the MASH strategic board. The board meets four times a year. The purpose of the Board is to provide strategic level oversight of the operations and performance of the MASH Partnership by:

- agreeing and monitoring key performance indicators, and developing analysis of the impact of the MASH Partnership;
- directing quality assurance activity (including audit) associated with MASH operations and associated partnership activity, including the collation and dissemination of learning;
- commissioning analysis to inform improvement and developmental activity;
- responding to local and national policy and legislative change to ensure partnership practice is aligned;
- developing and monitoring a programme of continuous learning and improvement activity, including associated communications and engagement plans;
- ensuring the formal Partnership Agreement remains fit for purpose through regular review and monitoring.

Current Areas of Focus

Neglect Strategy

“SEE. LISTEN. AND BELIEVE ME .” CHILDREN AT THE CENTRE OF OUR RESPONSE TO NEGLECT.

This Neglect Strategy is our approach to ensuring that all children and young people in Southwark experience good enough care while they are growing up. It sets out our approach to tackle child and adolescent neglect. We will do it together as a borough and a community. We will join hands with families, professionals and politicians in Southwark, while ensuring children are at the centre of our response. We want children in Southwark to have the best childhood that we can provide.

Current Areas of Focus

Neglect Strategy Principles

Children and **young people's voices and lived experiences** are at the centre of what we do

We will **support families**, so that children are brought up thriving and strong.

We will work as a **joined up partnership** to support families and also support each other.

We will listen and **intervene early** to prevent problems from getting worse.

We will support **our workforce** with the skills and tools they need to respond early and on time.

We will work together to **understand the needs** of Southwark's families, the impact of neglect and to understand the difference we are making.

We will work to recognize and **respond to challenges** in the environment that increase stress in families.

Current Areas of Focus

[Neglect Toolkit](#)

This Child Neglect Toolkit (adapted from the Lambeth Neglect Toolkit) is designed to assist you in identifying and assessing children who are likely to be experiencing of neglect. It is to be used when you are concerned that the quality of care of a child you are working with suggests that their needs are being neglected. It will help you to reflect on the child's circumstances and will help you put your concerns into context and identify strengths and resources.

The Child Neglect Toolkit can be used to inform decision-making, assessments, and planning. It can also be used in one to one's with managers or in supervision. It is a tool that can be used with families and does not replace other assessments such as the Early Help Assessment and or Children's Social Care Child and Family assessments. Where professionals have concerns around Neglect the toolkit should be used to support the evidence gathering along with the multi-agency referral form.

Current Areas of Focus

[The Child Safeguarding Practice Review Panel - I wanted them all to notice](#)

Southwark Safeguarding Children's Partnership is working with all partners to identify how we all effectively respond to sexual abuse in the family environment. This is in response to The Child Safeguarding Practice Review Panel's investigation into protecting children and responding to child sexual abuse within the family environment (link above).

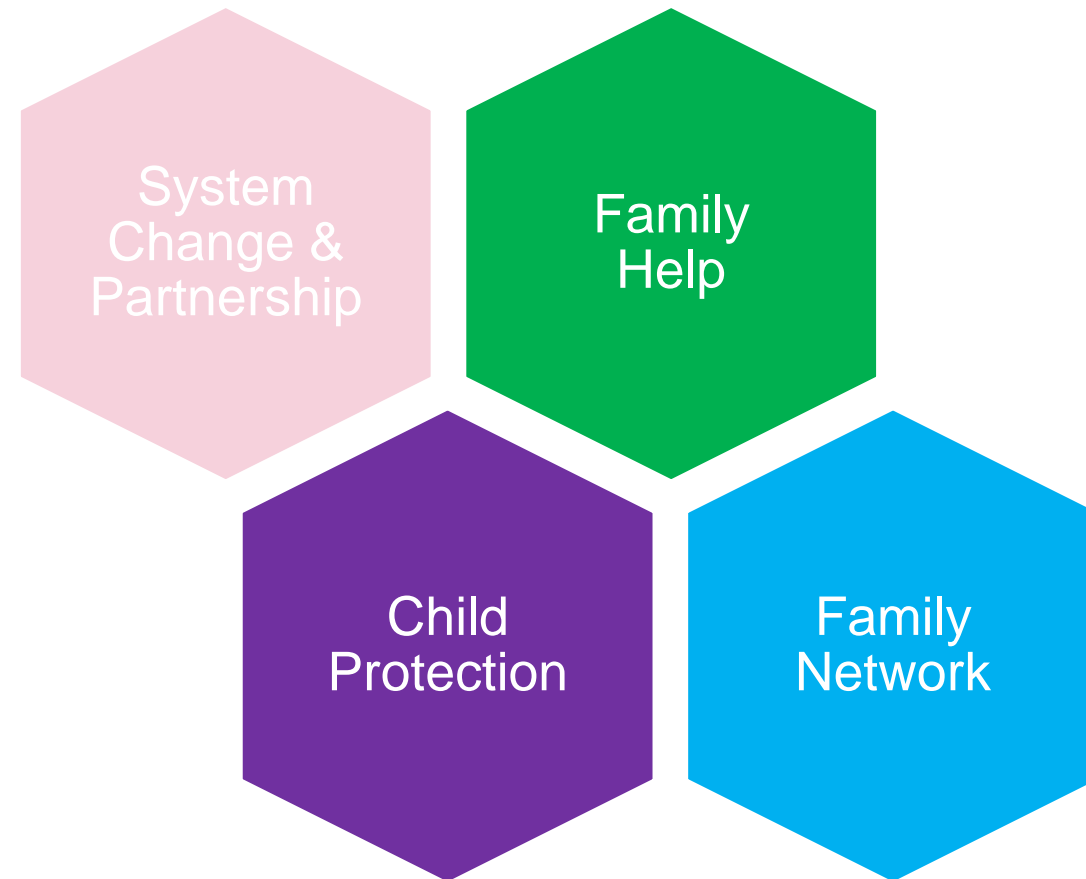
To do this the partnership are undertaking a number of activities:

- Audits of all children and young people referred into MASH or Family Early Help with Child Sexual Abuse flagged as a referral concern over a three-month period.
- Appreciative Enquiries – discussions with representatives from all partners about their experiences of managing situations where familial child sexual abuse is identified and/or suspected, facilitated by independent consultants.
- Questionnaires to all Safeguarding Leads across the partnership to stocktake training and levels of confidence in this area.

Children's Social Care Reforms

Families First Partnership Programme

- **Family help** – integrating targeted early help and child in need to deliver a seamless offer of multi-disciplinary Family Help, including the integration of front door arrangements and triage
- **Multi-agency child protection** – establishing new expert led multi-agency child protection teams (MACPTs) to support the local authority to discharge its duties under section 47 of the Children Act 1989.
- **Family group decision making** – building a 'family first' culture by integrating family group decision making at every point of intervention with families.
- **Key principles and system enablers** – embedding the Children's Social Care National Framework locally, improving information sharing and the use of data, streamlining systems, enhancing multi-agency safeguarding arrangements and increasing the use of evidence-based intervention.



Any questions

